



# Custom solutions

Uninterruptible Power Supplies (UPS)

**SALICRU**

## SALICRU: LIFE WITHOUT INTERRUPTIONS

One of the drawbacks of the technological advances that we live with nowadays **is the increasing dependence on the proper operation of the information and electronic systems that surround us** and form part of our daily life.

**Salicru introduced the first UPS prototype in Spain** in 1973. Five decades later, we are the **top company in Spain in the power electronics sector**, with **14 sales offices in the country**, and with the greatest international growth potential in terms of both turnover and structure, turning the company into a global benchmark.

The company began life as a family firm and from the very beginning it has had **a clear focus on internationalisation** as a fundamental strategy for developing its business. **Salicru is therefore now present with products and services in over 130 countries**, has two production centres in Spain and China, and has **subsidiaries in 9 countries**.



Philosophy:  
**PROXIMITY**



*Ensuring energy availability is the mission of **Salicru**,  
through a wide range of solutions,  
guaranteeing a continuous, clean, reliable and ecological electricity supply*

Along with developing, manufacturing and selling all these products, the experience it has gained since it was established has enabled **Salicru** to also provide **engineering and consultancy services** to its customers to solve any incidents involving the electricity supply.

With the aim of always offering products that best suit customer requirements, **Salicru** never ceases to research and innovate. We therefore devote an **average of 5% of our annual turnover** to the Research and Technological Development (R&D+i) Area, which is four times higher than the average 1.28% of national tech companies or almost triple the European average of 1.87%.

### R&D investment



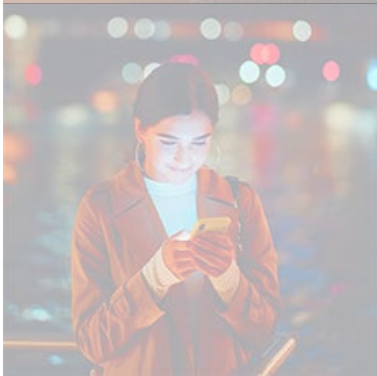
#### Investment

**SPAIN** 1,28%

**EUROPE** 1,87%

**SALICRU** ▲ **5%**





## MARKETS

Salicru markets power electronics products in the industrial, electronic, IT, and telecommunications markets, as well as the field of eco-efficiency and renewables, with the following distribution:

- **HOMES, OFFICES and SHOPS:** we have an increasing number of computer and audiovisual equipment connected to the internet, which is a significant data storage bank with files of great strategic value which must remain permanently available.
- **SME, LARGE CORPORATIONS and PUBLIC SECTOR BODIES:** these store and process and large volume of information that requires the utmost security to guarantee confidentiality and continuous available.
- **INDUSTRY:** a continuous, reliable, efficient and economical power supply in industrial environments is as critical as it is vital to ensure maximum business competitiveness.
- **INFRASTRUCTURES and ENERGY:** high-performance protection for large critical applications. What would happen if air traffic control radar lost its electrical supply? Or if traffic lights did? Or operating theatres? Or water treatment plants?
- **TELECOM:** in telecommunications, an interruption means the paralysis of services, corruption or loss of data, damage to equipment, and downtime.
- **ENERGY EFFICIENCY and RENEWABLES:** society and industry demand equipment that saves costs and promotes sustainable use to protect the environment.

## CUSTOMERS



# UNINTERRUPTIBLE POWER SUPPLIES

## Domestic UPS

- The **SPS HOME** is a 6-socket base with the capacity to protect loads with active power factor corrector (APFC).
- The **SPS SOHO+** includes an automatic voltage regulator (AVR) to reduce possible fluctuations in input voltage, thereby lowering battery use and extending its life.
- The **SPS ONE**, also with AVR, offers protection for the equipment and devices forming computer environments.



## Line-Interactive UPS

- The **SPS ADVANCE RT2** series is an extremely versatile solution for protecting a wide range of IT equipment such as basic servers, routers, switches, hubs and point-of-sale, etc., 2U in height, and with tower/rack environment installation requirements and 800 to 3000 VA.
- The **SPS ADVANCE R** series is especially designed for installation on racks with high occupation density, with AVR and APFC compatibility, a height of 1U, and powers of 750 to 1500 VA.
- The **SPS ADVANCE T** series provides an optimum combination of features to protect all computer room equipment, from entry-level servers to backup systems, with AVR, APFC compatibility, and powers of 850 to 3000 VA.



## On-line Single-Phase UPS

- The **SLC TWIN RT2 LION** (1-3 kVA) include a wide range of options for communication and **lithium-ion batteries**, which means they require no battery maintenance, charge four times faster, and they adapt better to hostile environments. This UPS is adaptable to any tower/rack environment.
- The **SLC TWIN PRO3** (4-10kVA) and **SLC TWIN PRO2** (0.7-3 kVA) series are designed to safely power ERP systems, Business Intelligence (BI), CRM solutions, intranets/extranets, networks, etc. They are in **tower format** and include additional battery modules.
- The **SLC TWIN RT3 1-10 kVA** series has a range of powers designed to protect departmental networks, workstations and their associated peripherals, servers, telephony-VOIP, industrial processes, medical equipment, etc. They adapt to suit any tower/rack environment and include additional battery modules of the same size.

The **SLC TWIN PRO3** and **SLC TWIN RT3** models include **native IoT**, which means they can be monitored and apply actions from the cloud (mobile app/web platform). It has a power factor of **PF=1**, which means  $kVA = kW$ . Both include the Eco Mode function and automatic external battery module detection. Their interface is in more than ten languages.



## On-line Three-Phase UPS

- The **SLC CUBE3+** and **SLC CUBE3+ PS** series combines the latest innovations in power electronics applied to high-quality a.c. electricity supply to protect and secure a wide range of environments, including the latest **Peak Shaving (PS)** technologies.
- The **SLC CUBE4** and **SLC CUBE4 R** are the most ground-breaking UPS **with IoT** in terms of safety for all critical systems and sensitive loads, with a power factor of 1 (**PF=1**), Ecomode, and a range of powers from 7.5 to 80 kVA, and with cloud connectivity functions.
- The **SLC X-TRA** is one of the most reliable and best performing UPS on the market. With a range of powers between 100 and 800 kVA, it is based on the VFI (independent voltage and frequency) operating mode.
- The **SLC X-PERT** series has DSP control and a compact design. It offers one of the highest efficiencies on the market in VFI mode, reaching between 95 and 96% in normal mode and **up to 97%** in high-efficiency mode, in addition to a power factor of 1.



## Modular On-line UPS

- The **SLC ADAPT 2** are adaptable, scalable and modular solutions for superior electrical protection, based on scalable modules of 10 or 15 kW <sup>(1)</sup>, or 25 or 50 kW<sup>(2)</sup>, with **PF=1** and three-level **DSP control** technology to IGBT.

(1) In rack configuration

(2) In cabinet configuration



UPS Recommender

## CUSTOM SOLUTIONS

**Salicru adopts flexibility as one of its principles** to meet the needs of its customers, offering custom solutions based on standard series technologies. The solutions **always include in-house developments**, as those existing on the market do not normally meet all the needs of each company, and they pass the strictest quality controls to ensure the solutions offered meet the needs and expectations of its customers. There are two custom solution models, developing **solutions from scratch** or through **equipment customisation**. In this latter case, some of the characteristics include the following:

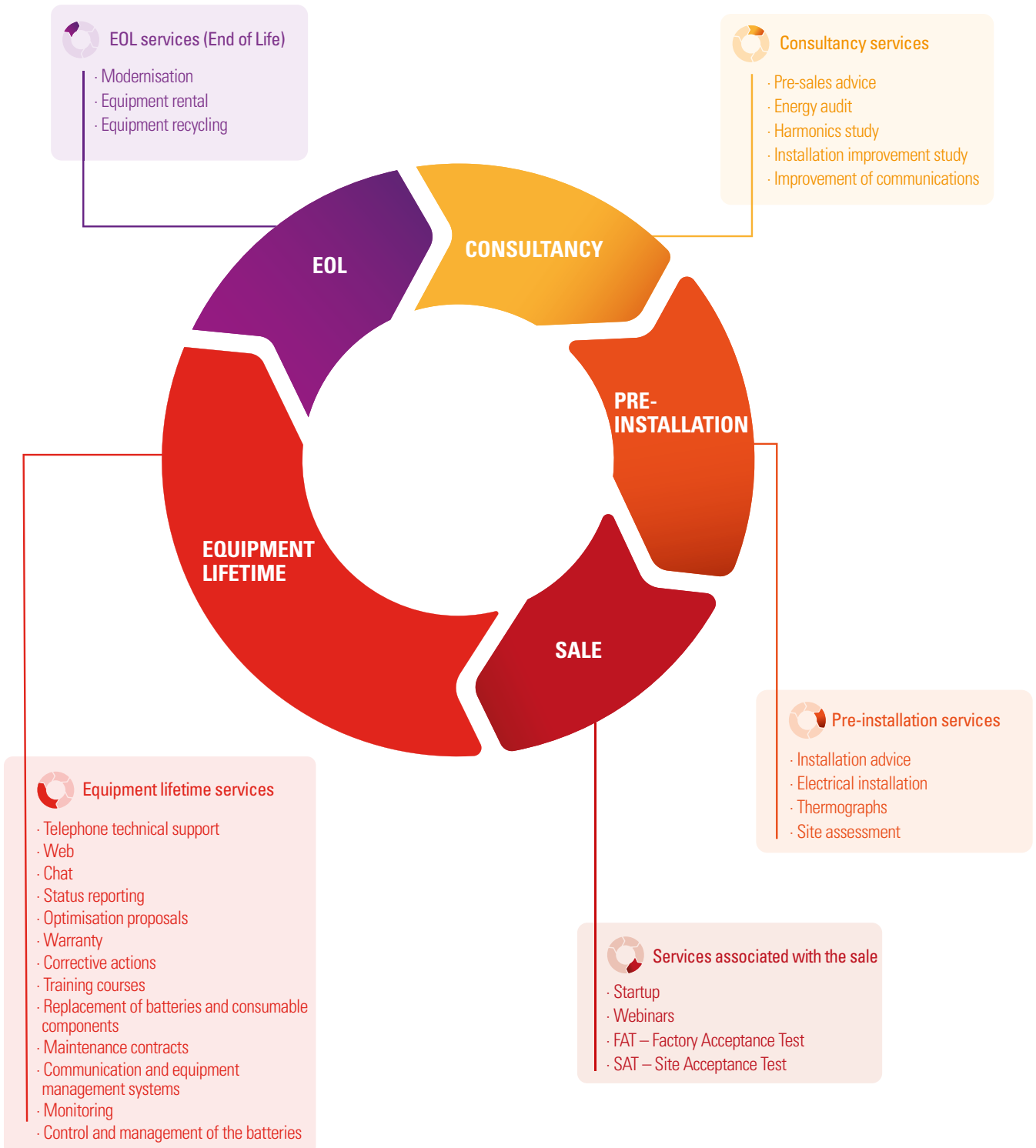


<p><b>Branding</b></p> <p>Product marking, logo, documentation and packaging</p>	<p><b>Outer coating</b></p> <p>Specific dimensions, design and colour options</p>	<p><b>Screens and keys</b></p> <p>Providing any specific information</p>	<p><b>Battery configuration</b></p> <p>Capacity, type and number</p>	<p><b>Communication protocols</b></p> <p>Ensuring compatibility</p>
<p><b>Remote monitoring and management software</b></p> <p>Interface and SW function customisation</p>	<p><b>Input and output connectors</b></p> <p>Number, type, power supply and regions</p>	<p><b>Safety and conformity</b></p> <p>Compliance with standards and regulations according to region or sector</p>	<p><b>Customisation of technical specifications</b></p> <p>Regulation of input voltage, frequency conversion, load shedding capacities, tropicalisation, etc.</p>	

# CATALOGUE OF SERVICES

Salicru's services are not limited to interventions during the product's operation. Alongside the stages that make up the *customer journey*, we have drawn on **our years of experience and knowledge of our customer's needs to create a complete catalogue of services** that guarantee operational continuity and, therefore, your peace of mind.

(\*) All services described below are available in Spain and Portugal. Please request information on availability in other countries at [services@salicru.com](mailto:services@salicru.com).



# MAINTENANCE CONTRACTS

SALICRU offers a range of maintenance packages that include **preventive and corrective interventions**. Preventive actions guarantee the customer **improved safety with regard to the maintenance and proper functioning** of the equipment. All the maintenance plans include an **annual preventive visit** during which specialised technicians carry out a series of verifications, checks and adjustments to the systems. Corrective maintenance and/or repair visits are included in all the **maintenance plans**, and are unlimited. We will therefore inspect the equipment as many times as necessary in the event of faults.

## SUCCESSFUL CASES

The prestige and experience of **Salicru** have enabled the company to take part in unique projects which include electrical infrastructures, industry, branches of banks, transport, DPCs, health centres, etc., in the areas of guaranteed electricity supply, photovoltaic installation, voltage stabilisation and the application of d.c. systems and lighting.

- Provision of DC Systems to the **Islands of Neom project**, which involved creating the city of the future (Saudi Arabia)
- Lighting for access to the **Great Wall of China** (Beijing, China)
- Energy coverage for the **new AVE high-speed rail lines** (Spain)
- Emergency power supply for the turbines of the Spanish Navy's **F-100 frigates** (El Ferrol, Spain)
- Prototype of **Ferrolinera**, a device to transform the DC of the **Commuter and AVE high-speed rail network** catenaries to power stations, substations and EV charging points (Madrid, Spain)
- Photovoltaic power for the **"Galapagos with its own electricity" project** on the Galapagos Islands (Ecuador)
- Lighting at **Barcelona Airport**, Torres Mega (Barcelona, Spain)
- Protection of the **traffic lights systems in Barcelona and Zaragoza** (Spain)
- TRAC (**rural mobile telephone access**) project (Spain)
- **Madrid and Bilbao Metro** (Spain)
- Energy coverage for all sites of **Ferrocarrils de la Generalitat de Catalunya** (FGC) Railway Network
- Energy coverage for the stations of the **Swedish Railway Network**.
- Protection of the **2015 Africa Cup** (Equatorial Guinea and Gabon)
- Protection of the video signal for the **television broadcasting in 1st and 2nd division football stadiums** (Spain)
- Protection of the **CaixaBank electricity grid** (Spain)
- Guaranteed electricity for the **Oxigen Data Center DPC** (Barcelona, Spain)
- Power supply to the **Pepsico production plant** (Pakistan)
- Branches and ATMs of the **Bank of Riyadh** (Saudi Arabia)
- Provision of guaranteed energy to the control centres of the **Aviation Authority in Dublin** and Shannon (Ireland)
- Power for engine equipment control at the **AIRBUS plant** in Bremen (Germany)

Find more successful cases at [www.salicru.com](http://www.salicru.com)



# SALICRU

Avda. de la Serra 100  
08460 Palautordera  
**BARCELONA**  
Tel. +34 93 848 24 00  
salicru@salicru.com  
**SALICRU.COM**

## SALES & SERVICE OFFICES

ALICANTE	LAS PALMAS DE G. CANARIA	SANTA CRUZ DE TENERIFE
BARCELONA	MADRID	SEVILLE
BILBAO	MALAGA	VALENCIA
GIJON	PALMA DE MALLORCA	ZARAGOZA
LA CORUNA	SAN SEBASTIAN	

## SUBSIDIARIES

AUSTRALIA	MOROCCO	PORTUGAL
CHINA	MEXICO	UNITED ARAB EMIRATES
FRANCE	PERU	UNITED KINGDOM

## REST OF THE WORLD

ALGERIA	DENMARK	JORDAN	POLAND
ANDORRA	DOMINICAN REPUBLIC	KUWAIT	ROMANIA
ARGENTINA	ECUADOR	LATVIA	RUSSIA
AUSTRIA	EGYPT	LIBYA	SAUDI ARABIA
BAHRAIN	EL SALVADOR	LITHUANIA	SENEGAL
BANGLADESH	EQUATORIAL GUINEA	MADAGASCAR	SINGAPORE
BELARUS	ESTONIA	MALAYSIA	SWEDEN
BELGIUM	FINLAND	MALTA	SWITZERLAND
BOLIVIA	GERMANY	MAURITANIA	SYRIA
BRAZIL	GREECE	NETHERLANDS	TUNISIA
BULGARIA	GUATEMALA	NICARAGUA	TURKEY
CHILE	INDONESIA	NIGERIA	UKRAINE
COLOMBIA	IRAN	NORWAY	UNITED STATES
CUBA	IRELAND	PAKISTAN	URUGUAY
CYPRUS	ITALY	PANAMA	VENEZUELA
CZECH REPUBLIC	IVORY COAST	PHILIPPINES	VIETNAM

## Product Range

Uninterruptible Power Supplies (UPS)  
Solar Inverters  
Variable Frequency Drives  
DC Systems  
Transformers and Autotransformers  
Voltage Stabilisers  
Protective Power Strips  
Batteries

**+160.000**  
**EQUIPMENTS**  
production  
per year

**+2.000.000**  
**EQUIPMENTS**  
in operation  
worldwide

**+200**  
**MVA/YEAR**  
safe power  
supply



**SALICRU**  
**SMART**  
SOLUTIONS

